



# Series 3000 and XE-Series Engineering Data

BAC AUSTRALIA

# Series 3000 and XE-Series Engineering Data

The NEW era of Series 3000 and XE-Series Cooling Towers continue to exceed the industry standard for factory assembled products. With its low environmental impact design and expanded capacities that range from 751 to 5,944 nominal tons, the NEW Series 3000 is the optimal solution for all your project needs. The NEW Series 3000 Cooling Tower offers up to a 16% capacity increase and the XE-Series Cooling Tower far exceeds the requirements of section J of the Building Code of Australia

## TABLE OF CONTENTS

---

**2      SERIES 3000 ELEVATION DRAWINGS**

---

**3      SERIES 3000 SINGLE CELL DATA**

---

**5      XE-SERIES DATA**

---

**7      SERIES 3000 2-CELL DATA**

---

**9      CONNECTION DATA**

---

**11     BASINLESS CONSTRUCTION**

---

**13     STRUCTURAL SUPPORT**

---

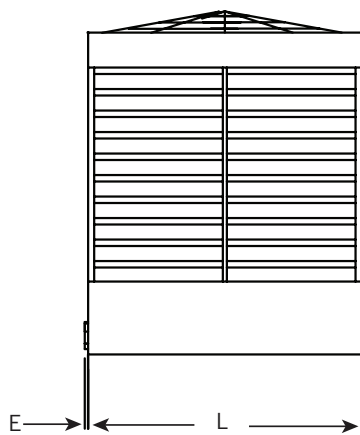
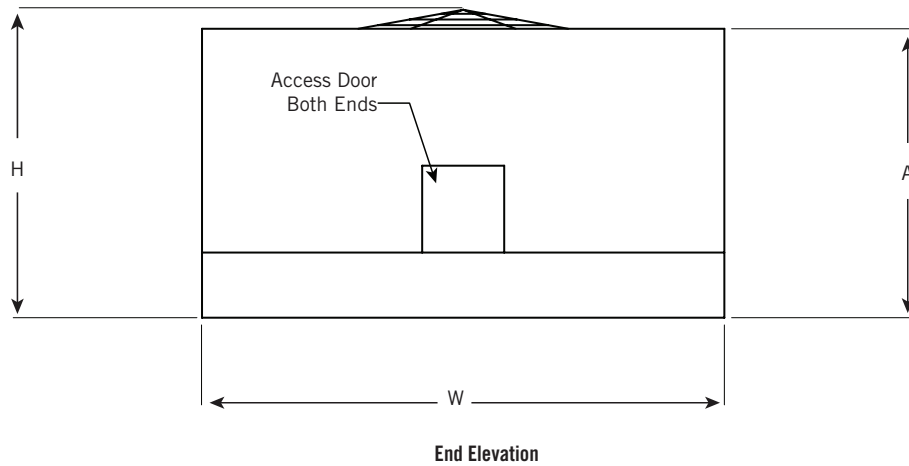
**15     ALTERNATIVE STRUCTURAL SUPPORT  
AND HEATER KW**

---

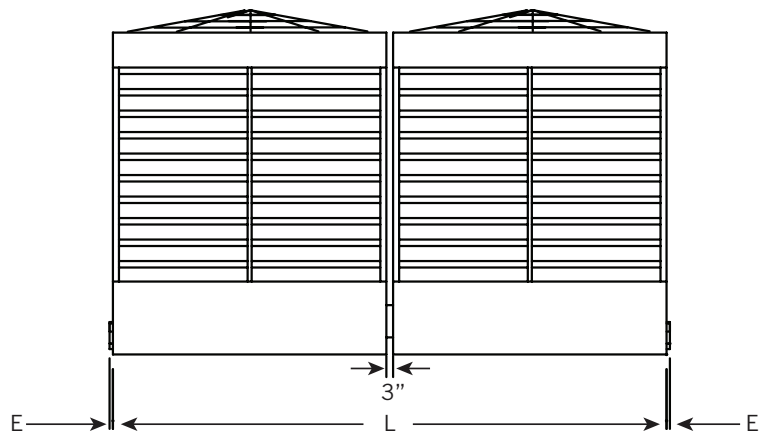




**NOTE: Do not use for construction.** Refer to factory certified dimensions. This catalog includes data current at the time of publication, which should be reconfirmed at the time of purchase. Up-to-date engineering data, free product selection software, and more can be found at [www.Baltimoreaircoil.com.au](http://www.Baltimoreaircoil.com.au).



Side Elevation: Single Cell Unit



Side Elevation: Double Cell Unit



**Note:** The following units ship in two sections per cell. The top section is the heaviest and tallest. Top section heights are:

S3E Model	Catalog Upper Section With Installed Fan Guard Height (mm)	S3E Model	Catalog Upper Section With Installed Fan Guard Height (mm)
S3E-1222-10x	3124	S3E-1424-13x (L to Q)	3175
S3E-1222-12x	3124	S3E-1424-13 (R to S)	3327
S3E-1222-13x	3124	S3E-1424-13x (T)	3429
S3E-1222-14x	3531	S3E-1424-14x (M to Q)	3581
S3E-1424-12x (L to Q)	3175	S3E-1424-14x (R to S)	3327
S3E-1424-12x (R to S)	3327	S3E-1424-14x (T)	3835
S3E-1424-12x (T)	3429		

# Series 3000 Single Cell Data

## SERIES 3000 UNITS

Model Number	Motor kW	Fan (m3/s)	Weights (kg)			Dimensions <sup>[3]</sup>			
			Operating <sup>[2]</sup>	Shipping	Heaviest Section	L	W	H <sup>[4]</sup>	A
S3E-8518-05L	11	36.5	6883	3643	3643	2591	5512	2997	1829
S3E-8518-05M	15	39.9	6910	3671	3671	2591	5512	2997	1829
S3E-8518-06L	11	39.7	7273	3793	3793	2591	5512	3404	3048
S3E-8518-06M	15	43.4	7282	3802	3802	2591	5512	3404	3048
S3E-8518-06N	18.5	46.4	7296	3816	3816	2591	5512	3404	3048
S3E-8518-06O	22	49.1	7319	3838	3838	2591	5512	3404	3048
S3E-8518-07M	15	46.7	8317	3975	3975	2591	5512	3810	3454
S3E-8518-07N	18.5	50.0	8330	3988	3988	2591	5512	3810	3454
S3E-8518-07O	22	52.8	8353	4011	4011	2591	5512	3810	3454
S3E-8518-07P	30	57.5	8426	4083	4083	2591	5512	3810	3454
S3E-1020-06M	15	46.2	8684	4328	4328	2997	6121	3302	3048
S3E-1020-06N	18.5	49.4	8748	4392	4392	2997	6121	3302	3048
S3E-1020-06O	22	52.3	8770	4415	4415	2997	6121	3302	3048
S3E-1020-07M	15	49.9	9156	4487	4487	2997	6121	3708	3454
S3E-1020-07N	18.5	53.4	9220	4551	4551	2997	6121	3708	3454
S3E-1020-07O	22	56.4	9242	4574	4574	2997	6121	3708	3454
S3E-1020-07P	30	61.6	9315	4646	4646	2997	6121	3708	3454
S3E-1222-06M	15	53.0	10735	5163	5163	3607	6579	3327	3048
S3E-1222-06N	18.5	56.7	10799	5227	5227	3607	6579	3327	3048
S3E-1222-06O	22	60.0	10821	5250	5250	3607	6579	3327	3048
S3E-1222-07N	18.5	61.4	11411	5499	5499	3607	6579	3734	3454
S3E-1222-07O	22	64.9	11434	5522	5522	3607	6579	3734	3454
S3E-1222-07P	30	70.7	11506	5594	5594	3607	6579	3734	3454
S3E-1222-07Q	37	75.6	11511	5599	5599	3607	6579	3734	3454
S3E-1222-07R	45	79.9	11856	5944	5944	3607	6579	3734	3454
S3E-1222-10P	30	85.2	15204	6956	4088	3607	6579	5004	4724
S3E-1222-10Q	37	90.9	15277	7028	4161	3607	6579	5004	4724
S3E-1222-10R	45	95.8	15281	7033	4165	3607	6579	5004	4724
S3E-1222-10S	55	102.2	15717	7468	4601	3607	6579	5004	4724
S3E-1222-12P	30	90.4	16447	7377	4138	3607	6579	5817	5537
S3E-1222-12Q	37	96.4	16475	7405	4165	3607	6579	5817	5537
S3E-1222-12R	45	101.6	16570	7500	4260	3607	6579	5817	5537
S3E-1222-12S	55	108.3	17005	7936	4696	3607	6579	5817	5537
S3E-1222-13P	30	93.0	16865	7586	4138	3607	6579	6223	5944
S3E-1222-13Q	37	99.1	16892	7613	4165	3607	6579	6223	5944
S3E-1222-13R	45	104.4	16987	7709	4260	3607	6579	6223	5944
S3E-1222-13S	55	111.3	17024	7745	4297	3607	6579	6223	5944



**NOTE: Do not use for construction.** Refer to factory certified dimensions. This catalog includes data current at the time of publication, which should be reconfirmed at the time of purchase. Up-to-date engineering data, free product selection software, and more can be found at [www.Baltimoreaircoil.com.au](http://www.Baltimoreaircoil.com.au).

## SERIES 3000 UNITS

Model Number	Motor HP	Fan (m3/s)	Weights (kg)			Dimensions <sup>(4)</sup>			
			Operating <sup>(2)</sup>	Shipping	Heaviest Section	L	W	H <sup>(3)</sup>	A
S3E-1222-14P	40	96.2	17055	7781	4356	3607	6579	6629	6350
S3E-1222-14Q	50	102.6	17083	7809	4383	3607	6579	6629	6350
S3E-1222-14R	60	108.1	17155	7881	4456	3607	6579	6629	6350
S3E-1222-14S	75	115.2	17191	7917	4492	3607	6579	6629	6350
S3E-1222-14T	100	125.1	18063	8789	4986	3607	6579	6629	6350
S3E-1424-07D	30	72.8	15653	7468	7468	4267	7341	3759	3454
S3E-1424-07P	40	79.4	15726	7541	7541	4267	7341	3759	3454
S3E-1424-07Q	50	84.9	15730	7545	7545	4267	7341	3759	3454
S3E-1424-07R	60	89.7	15735	7550	7550	4267	7341	3759	3454
S3E-1424-12Q	50	110.6	20181	9819	5399	4267	7341	5867	5537
S3E-1424-12R	60	116.5	20254	9891	5472	4267	7341	6070	5537
S3E-1424-12S	75	124.1	20277	9914	5495	4267	7341	6070	5537
S3E-1424-12T	100	131.9	21148	10785	5989	4267	7341	6121	5537
S3E-1424-13Q	50	114.0	20808	9995	5399	4267	7341	6274	5994
S3E-1424-13R	60	120.0	20880	10068	5472	4267	7341	6426	5994
S3E-1424-13S	75	127.8	20903	10091	5495	4267	7341	6426	5994
S3E-1424-13T	100	135.9	21774	10962	5989	4267	7341	6528	5994
S3E-1424-14Q	50	118.4	21525	10172	5740	4267	7341	6680	6350
S3E-1424-14R	60	124.6	21597	10245	5812	4267	7341	6833	6350
S3E-1424-14S	75	132.6	21620	10268	5835	4267	7341	6833	6350
S3E-1424-14T	100	140.9	22491	11139	6329	4267	7341	6934	6350



### NOTES FOR SINGLE CELL UNITS:

1. S3E-1222-14T, S3E-1424-12T, S3E-1424-13T and S3E-1424-14T are supplied with a gear drive system as standard.
2. Operating weight is based on the water level in the cold water basin at overflow height. If a lower operating weight is needed to meet design requirements, your local BAC Representative can provide additional assistance.
3. Refer to **page 2** for dimensional reference drawings.
4. Models shipped with an optional gear drive or Low Sound Fan may have heights up to 270mm greater than shown. For units with Whisper Quiet Fans please contact your local BAC Representative for height dimensions.



# XE-Series Data

## XE-SERIES UNITS

Model Number	Motor HP	Fan (m3/s)	Weights (kg)			Dimensions <sup>(4)</sup>			
			Operating <sup>(3)</sup>	Shipping	Heaviest Section	L	W	H <sup>(5)</sup>	A
XES3E-8518-05G	2.2	22.1	6806	3566	3566	2590	5512	2997	2692
XES3E-8518-05H	4	25.9	6810	3571	3571	2590	5512	2997	2692
XES3E-8518-05J	5.5	29.4	6824	3584	3584	2590	5512	2997	2692
XES3E-8518-05K	7.5	32.2	6828	3589	3589	2590	5512	2997	2692
XES3E-8518-06G	2.2	24.2	7219	3739	3739	2590	5512	3404	3048
XES3E-8518-06H	4	28.3	7223	3743	3743	2590	5512	3404	3048
XES3E-8518-06J	5.5	32.1	7237	3757	3757	2590	5512	3404	3048
XES3E-8518-06K	7.5	35.1	7241	3761	3761	2590	5512	3404	3048
XES3E-8518-07G	2.2	26.2	8253	3911	3911	2590	5512	3810	3454
XES3E-8518-07H	4	30.7	8258	3916	3916	2590	5512	3810	3454
XES3E-8518-07J	5.5	34.7	8271	3929	3929	2590	5512	3810	3454
XES3E-8518-07K	7.5	37.9	8276	3934	3934	2590	5512	3810	3454
XES3E-8518-07L	11	42.8	8308	3966	3966	2590	5512	3810	3454
XES3E-1020-06G	2.2	25.8	8630	4274	4274	2997	6121	3302	3048
XES3E-1020-06H	4	30.2	8634	4279	4279	2997	6121	3302	3048
XES3E-1020-06J	5.5	34.2	8639	4283	4283	2997	6121	3302	3048
XES3E-1020-06K	7.5	37.4	8643	4288	4288	2997	6121	3302	3048
XES3E-1020-06L	11	42.3	8675	4319	4319	2997	6121	3302	3048
XES3E-1020-07G	2.2	27.9	9093	4424	4424	2997	6121	3708	3454
XES3E-1020-07H	4	32.7	9097	4428	4428	2997	6121	3708	3454
XES3E-1020-07J	5.5	37.0	9111	4442	4442	2997	6121	3708	3454
XES3E-1020-07K	7.5	40.4	9115	4446	4446	2997	6121	3708	3454
XES3E-1020-07L	11	45.8	9601	4478	4478	2997	6121	3708	3454
XES3E-1222-06H	4	34.6	10676	5104	5104	3607	6579	3327	3048
XES3E-1222-06J	5.5	39.3	10690	5118	5118	3607	6579	3327	3048
XES3E-1222-06K	7.5	42.9	10694	5123	5123	3607	6579	3327	3048
XES3E-1222-06L	11	48.5	10726	5154	5154	3607	6579	3327	3048
XES3E-1222-07J	5.5	42.5	11302	5390	5390	3607	6579	3734	3454
XES3E-1222-07K	7.5	46.4	11307	5395	5395	3607	6579	3734	3454
XES3E-1222-07L	11	52.6	11338	5426	5426	3607	6579	3734	3454
XES3E-1222-07M	15	57.4	11348	5436	5436	3607	6579	3734	3454
XES3E-1222-10K	7.5	56.6	15014	6765	3897	3607	6579	5004	4724
XES3E-1222-10L	11	63.9	15045	6797	3929	3607	6579	5004	4724
XES3E-1222-10M	15	69.6	15054	6806	3938	3607	6579	5004	4724
XES3E-1222-10N	18.5	74.3	15118	6869	4002	3607	6579	5004	4724
XES3E-1222-10O	22	78.3	15141	6892	4025	3607	6579	5004	4724
XES3E-1222-12K	7.5	60.3	16257	7187	3947	3607	6579	5817	5537
XES3E-1222-12L	11	68.0	16289	7219	3979	3607	6579	5817	5537
XES3E-1222-12M	15	74.0	16298	7228	3988	3607	6579	5817	5537
XES3E-1222-12N	18.5	78.9	16361	7291	4052	3607	6579	5817	5537
XES3E-1222-12O	22	83.2	16384	7314	4074	3607	6579	5817	5537



**NOTE: Do not use for construction.** Refer to factory certified dimensions. This catalog includes data current at the time of publication, which should be reconfirmed at the time of purchase. Up-to-date engineering data, free product selection software, and more can be found at [www.Baltimoreaircoil.com.au](http://www.Baltimoreaircoil.com.au).

## XE-SERIES UNITS

Model Number	Motor HP	Fan (m3/s)	Weights (kg)			Dimensions <sup>[3]</sup>			
			Operating <sup>[2]</sup>	Shipping	Heaviest Section	L	W	H <sup>[4]</sup>	A
XES3E-1222-13K	7.5	62.1	16674	7396	3947	3607	6579	6223	5944
XES3E-1222-13L	11	70.0	16706	7427	3979	3607	6579	6223	5944
XES3E-1222-13M	15	76.1	16715	7436	3988	3607	6579	6223	5944
XES3E-1222-13N	18.5	81.2	16779	7500	4052	3607	6579	6223	5944
XES3E-1222-13O	22	85.6	16801	7523	4074	3607	6579	6223	5944
XES3E-1222-14L	11	72.5	16897	7623	4197	3607	6579	6629	6350
XES3E-1222-14M	15	78.8	16909	7632	4206	3607	6579	6629	6350
XES3E-1222-14N	18.5	84.1	16969	7695	4270	3607	6579	6629	6350
XES3E-1222-14O	22	88.6	16992	7718	4292	3607	6579	6629	6350
XES3E-1424-07J	5.5	47.7	15522	7337	7337	4267	7341	3759	3454
XES3E-1424-07K	7.5	52.1	15526	7341	7341	4267	7341	3759	3454"
XES3E-1424-07L	11	59.0	15558	7373	7373	4267	7341	3759	3454
XES3E-1424-07M	15	64.4	15567	7382	7382	4267	7341	3759	3454
XES3E-1424-07N	18.5	68.9	15631	7446	7446	4267	7341	3759	3454
XES3E-1424-12L	11	78.4	19995	9632	5213	4267	7341	5867	5537
XES3E-1424-12M	15	85.2	20005	9642	5222	4267	7341	5867	5537
XES3E-1424-12N	18.5	90.8	20068	9705	5286	4267	7341	5867	5537
XES3E-1424-12O	22	95.7	20091	9728	5309	4267	7341	5867	5537
XES3E-1424-12P	30	103.8	20154	9791	5372	4267	7341	5867	5537"
XES3E-1424-13L	11	81.0	20622	9809	5213	4267	7341	6274	5944
XES3E-1424-13M	15	88.0	20631	9819	5222	4267	7341	6274	5944
XES3E-1424-13N	18.5	93.7	20694	9882	5286	4267	7341	6274	5944
XES3E-1424-13O	22	98.7	20717	9905	5309	4267	7341	6274	5944
XES3E-1424-13P	30	107.1	20780	97536	5372	4267	7341	6274	5944
XES3E-1424-14M	15	91.4	21348	9995	5563	4267	7341	6680	6350
XES3E-1424-14N	18.5	97.4	21411	10059	5626	4267	7341	6680	6350
XES3E-1424-14O	22	102.5	21434	10082	5649	4267	7341	6680	6350
XES3E-1424-14P	30	111.2	21497	10145	5712	4267	7341	6680	6350



### NOTES FOR XE-SERIES UNITS:

- Operating weight is based on the water level in the cold water basin at overflow height. If a lower operating weight is needed to meet design requirements, your local BAC Representative can provide additional assistance.
- Refer to **page 2** for dimensional reference drawings.
- Models shipped with an optional gear drive or Low Sound Fan may have heights up to 270mm greater than shown. For units with Whisper Quiet Fans please contact your local BAC Representative for height dimensions.

# Series 3000 Double Cell Units

## DOUBLE CELL SERIES 3000 UNITS

Model Number	Motor kW	Fan (m3/s)	Weights (kg)			Dimensions <sup>[3]</sup>			
			Operating <sup>[2]</sup>	Shipping	Heaviest Section	L	W	H <sup>[4]</sup>	A
S3E-8518-05L-2	11	36.5	6883	3643	3643	5258	5512	2997	1829
S3E-8518-05M-2	15	39.9	16910	3671	3671	5258	5512	2997	1829
S3E-8518-06L-2	11	39.7	7273	3793	3793	5258	5512	3404	3048
S3E-8518-06M-2	15	43.4	7282	3802	3802	5258	5512	3404	3048
S3E-8518-06N-2	18.5	46.4	7296	3816	3816	5258	5512	3404	3048
S3E-8518-06O-2	22	49.1	7319	3838	3838	5258	5512	3404	3048
S3E-8518-07M-2	15	46.7	8317	3975	3975	5258	5512	3810	3454
S3E-8518-07N-2	18.5	50.0	8330	3988	3988	5258	5512	3810	3454
S3E-8518-07O-2	22	52.8	8353	4011	4011	5258	5512	3810	3454
S3E-8518-07P-2	30	57.5	8426	4083	4083	5258	5512	3810	3454
S3E-1020-06M-2	15	46.2	8684	4328	4328	6045	6121	3302	3048
S3E-1020-06N-2	18.5	49.4	8748	4392	4392	6045	6121	3302	3048
S3E-1020-06O-2	22	52.3	8770	4415	4415	6045	6121	3302	3048
S3E-1020-07M-2	15	49.9	9156	4487	4487	6045	6121	3708	3454
S3E-1020-07N-2	18.5	53.4	9220	4551	4551	6045	6121	3708	3454
S3E-1020-07O-2	22	56.4	9242	4574	4574	6045	6121	3708	3454
S3E-1020-07P-2	30	61.6	9315	4646	4646	6045	6121	3708	3454
S3E-1222-06M-2	15	53.0	10735	5163	5163	7290	6579	3327	3048
S3E-1222-06N-2	18.5	56.7	10799	5227	5227	7290	6579	3327	3048
S3E-1222-06O-2	22	60.0	10821	5250	5250	7290	6579	3327	3048
S3E-1222-07N-2	18.5	61.4	11411	5499	5499	7290	6579	3734	3454
S3E-1222-07O-2	22	64.9	11434	5522	5522	7290	6579	3734	3454
S3E-1222-07P-2	30	70.7	11506	5594	5594	7290	6579	3734	3454
S3E-1222-07Q-2	37	75.6	11511	5599	5599	7290	6579	3734	3454
S3E-1222-07R-2	45	79.9	11856	5944	5944	7290	6579	3734	3454
S3E-1222-10P-2	30	85.2	15204	6956	4088	7290	6579	5004	4724
S3E-1222-10Q-2	37	90.9	15277	7028	4161	7290	6579	5004	4724
S3E-1222-10R-2	45	95.8	15281	7033	4165	7290	6579	5004	4724
S3E-1222-10S-2	55	102.2	15717	7468	4601	7290	6579	5004	4724
S3E-1222-12P-2	30	90.4	16447	7377	4138	7290	6579	5817	5537
S3E-1222-12Q-2	37	96.4	16475	7405	4165	7290	6579	5817	5537
S3E-1222-12R-2	45	101.6	16570	7500	4260	7290	6579	5817	5537
S3E-1222-12S-2	55	108.3	17005	7936	4696	7290	6579	5817	5537
S3E-1222-13P-2	30	93.0	16865	7586	4138	7290	6579	6223	5944
S3E-1222-13Q-2	37	99.1	16892	7613	4165	7290	6579	6223	5944
S3E-1222-13R-2	45	104.4	16987	7709	4260	7290	6579	6223	5944
S3E-1222-13S-2	55	111.3	17024	7745	4297	7290	6579	6223	5944





**NOTE: Do not use for construction.** Refer to factory certified dimensions. This catalog includes data current at the time of publication, which should be reconfirmed at the time of purchase. Up-to-date engineering data, free product selection software, and more can be found at [www.Baltimoreaircoil.com.au](http://www.Baltimoreaircoil.com.au).

## DOUBLE CELL SERIES 3000 UNITS

Model Number	Motor HP	Fan (m3/s)	Weights (kg)			Dimensions <sup>(4)</sup>			
			Operating <sup>(2)</sup>	Shipping	Heaviest Section	L	W	H <sup>(3)</sup>	A
S3E-1222-14P-2	40	96.2	17055	7781	4356	7290	6579	6629	6350
S3E-1222-14Q-2	50	102.6	17083	7809	4383	7290	6579	6629	6350
S3E-1222-14R-2	60	108.1	17155	7881	4456	7290	6579	6629	6350
S3E-1222-14S-2	75	115.2	17191	7917	4492	7290	6579	6629	6350
S3E-1222-14T-2	100	125.1	18063	8789	4986	7290	6579	6629	6350
S3E-1424-070-2	30	72.8	15653	7468	7468	8585	7341	3759	3454
S3E-1424-07P-2	40	79.4	15726	7541	7541	8585	7341	3759	3454
S3E-1424-07Q-2	50	84.9	15730	7545	7545	8585	7341	3759	3454
S3E-1424-07R-2	60	89.7	15735	7550	7550	8585	7341	3759	3454
S3E-1424-12Q-2	50	110.6	20181	9819	5399	8585	7341	5867	5537
S3E-1424-12R-2	60	116.5	20254	9891	5472	8585	7341	6070	5537
S3E-1424-12S-2	75	124.1	20277	9914	5495	8585	7341	6070	5537
S3E-1424-12T-2	100	131.9	21148	10785	5989	8585	7341	6121	5537
S3E-1424-13Q-2	50	114.0	20808	9995	5399	8585	7341	6274	5994
S3E-1424-13R-2	60	120.0	20880	10068	5472	8585	7341	6426	5994
S3E-1424-13S-2	75	127.8	20903	10091	5495	8585	7341	6426	5994
S3E-1424-13T-2	100	135.9	21774	10962	5989	8585	7341	6528	5994
S3E-1424-14Q-2	50	118.4	21525	10172	5740	8585	7341	6680	6350
S3E-1424-14R-2	60	124.6	21597	10245	5812	8585	7341	6833	6350
S3E-1424-14S-2	75	132.6	21620	10268	5835	8585	7341	6833	6350
S3E-1424-14T-2	100	140.9	22491	11139	6329	8585	7341	6934	6350



### NOTES FOR DOUBLE CELL UNITS:

1. S3E-1222-14T, S3E-1424-12T, S3E-1424-13T and S3E-1424-14T are supplied with a gear drive system as standard.
2. Operating weight is based on the water level in the cold water basin at overflow height. If a lower operating weight is needed to meet design requirements, your local BAC Representative can provide additional assistance.
3. Refer to **page 2** for dimensional reference drawings.
4. Models shipped with an optional gear drive or Low Sound Fan may have heights up to 270mm greater than shown. For units with Whisper Quiet Fans please contact your local BAC Representative for height dimensions.

# Series 3000 Connection Data

## CONNECTION DIMENSIONS

Model Number	Dimensions <sup>[1]</sup>				Inlet Connection Sizes <sup>[2,4]</sup>		Outlet Connection Sizes <sup>[3,4]</sup>	
	B	C	D	F	Easy Connect	Top Inlet	Outlet	Remote Sump
S3E/XES3E-8518-05x	1753	1143	229	1981	203	152	203	254
S3E/XES3E-8518-06x	2007	1143	229	1981	203	152	203	254
S3E/XES3E-8518-07x	2007	1143	254	1981	254	203	254	305
S3E/XES3E-1020-06x	2007	1143	254	2057	254	203	254	305
S3E/XES3E-1020-07x	2007	1143	254	2057	254	203	254	305
S3E/XES3E-1222-06x	2007	1219	254	2642	254	203	254	305
S3E/XES3E-1222-07x	2007	1219	254	2642	254	203	254	356
S3E/XES3E-1222-10x	3175	1219	254	2642	305	203	305	406
S3E/XES3E-1222-12x	3988	1219	254	2642	305	203	305	406
S3E/XES3E-1222-13x	4394	1219	254	2642	305	203	305	457
S3E/XES3E-1222-14x	4801	1219	254	2642	356	254	356	508
S3E/XES3E-1424-07x	2007	1245	254	2692	305	203	305	406
S3E/XES3E-1424-12x	3988	1245	254	2692	356	254	356	508
S3E/XES3E-1424-13x	4394	1245	254	2692	356	254	356	508
S3E/XES3E-1424-14x	4801	1245	254	2692	356	254	356	508

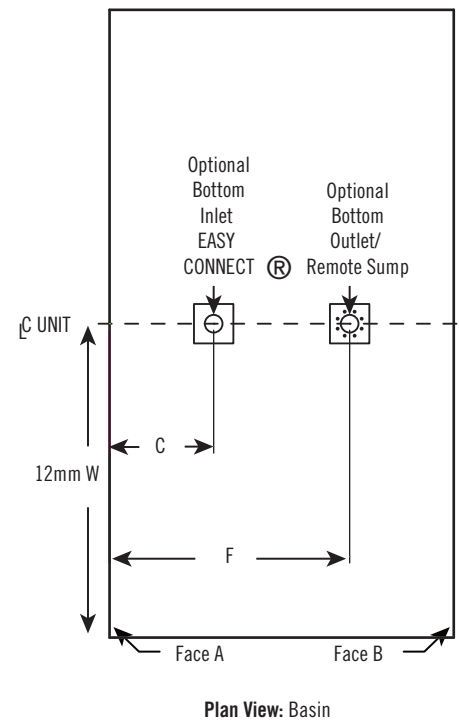
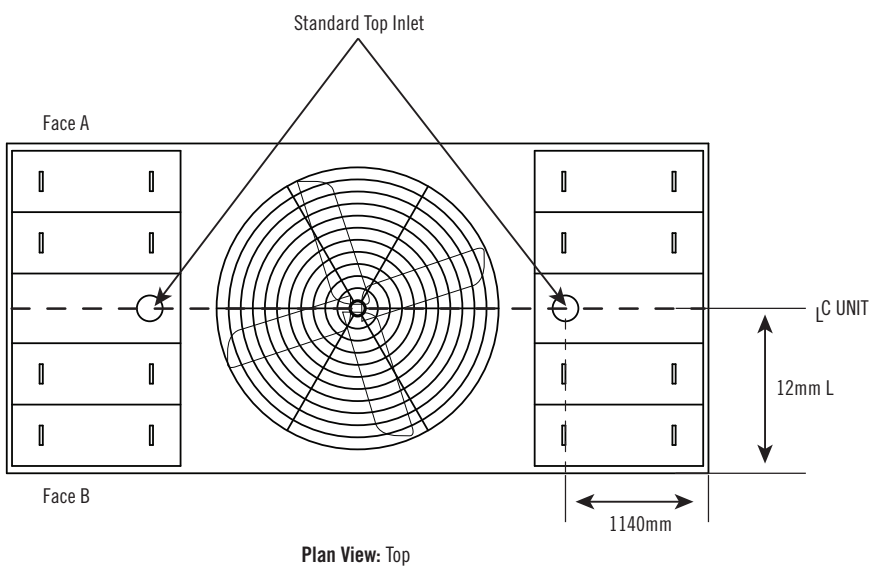
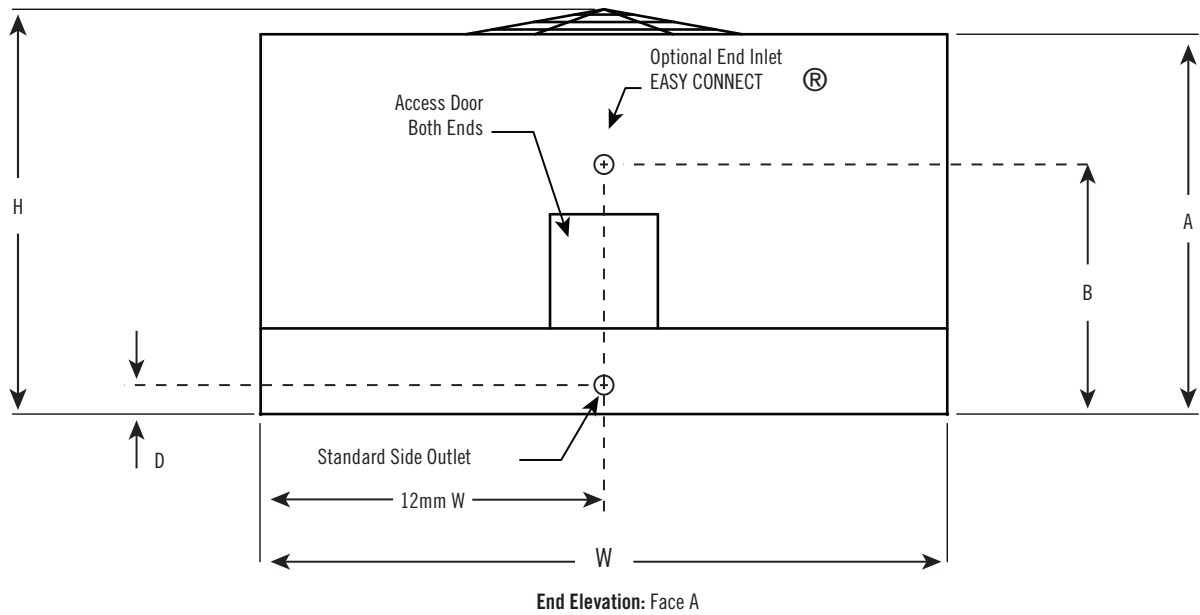


### NOTES FOR CONNECTION DIMENSIONS:

1. For dimension locations, see **page 10**.
2. The specific size of the inlet and outlet connection may vary with the design cooling water flow rate.
3. Unless otherwise indicated, all connections 80NB and smaller are male pipe thread, and connections 100NB and larger are beveled for welding and grooved to suit a mechanical coupling.
4. On double cell units, connections are the same size but are located on both ends of the unit. Refer to **page 2** for side elevation view.



**NOTE: Do not use for construction.** Refer to factory certified dimensions. This catalog includes data current at the time of publication, which should be reconfirmed at the time of purchase. Up-to-date engineering data, free product selection software, and more can be found at [www.Baltimoreaircoil.com.au](http://www.Baltimoreaircoil.com.au).



# Series 3000 Basinless Data

## CONCRETE BASIN ENGINEERING DATA FOR OPTIONAL BASINLESS UNITS

Model Number	Operating Load Vertical (kg)	Maximum Operating Weight (kg)	A	B	C	D
S3E/XES3E-8518-05x	830	4980	2760	5600	2800	-
S3E/XES3E-8518-06x	900	5390	2760	5600	2800	-
S3E/XES3E-8518-07x	1080	6495	2760	5600	2800	-
S3E/XES3E-1020-06x	1065	6380	3180	5600	3110	-
S3E/XES3E-1020-07x	1150	6925	3180	5600	3110	-
S3E/XES3E-1222-06x	1270	7595	3800	6670	3330	-
S3E/XES3E-1222-07x	1440	8630	3800	6670	3330	-
S3E/XES3E-1222-10x	2020	12105	3800	6670	3330	-
S3E/XES3E-1222-12x	2235	13395	3800	6670	3330	-
S3E/XES3E-1222-13x	2235	13410	3800	6670	3330	-
S3E/XES3E-1222-14x	2410	14455	3800	6670	3330	-
S3E/XES3E-1424-07x	1370	10935	4450	7430	2340	2740
S3E/XES3E-1424-12x	2080	16590	4450	7430	2340	2740
S3E/XES3E-1424-13x	2150	17210	4450	7430	2340	2740
S3E/XES3E-1424-14x	2245	17930	4450	7430	2340	2740

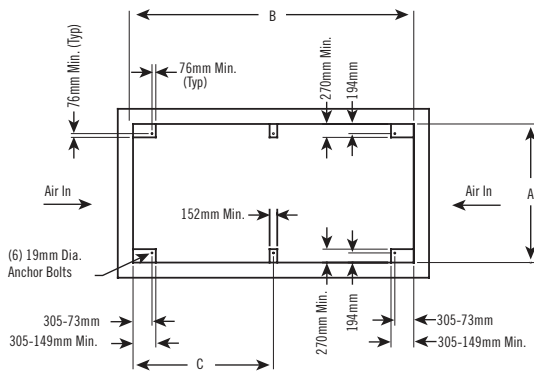


### NOTES FOR BASINLESS DATA:

1. Purchaser to design, construct, and furnish basin (including anchor bolts) in accordance with requirements given. Purchaser must also supply sump, overflow, drain, cleanout, and water make-up to suit requirements.
2. All anchor bolts shall be 19mm diameter, 38mm projection ( $\pm 1/4"$ ), fully threaded. Bolt to have one nut and washer. Anchor bolt and column bearing point locations and elevations must be maintained  $\pm 3$ mm.
3. Pier dimensions shown are minimum bearing surfaces required for the tower structure and do not include corner chamfers on the concrete piers.
4. Fill to be located below the operating water level (see Side View of Concrete Basin for All Models on **page 12**).
5. Maximum operating weight does not include concrete basin or water retained in the basin.

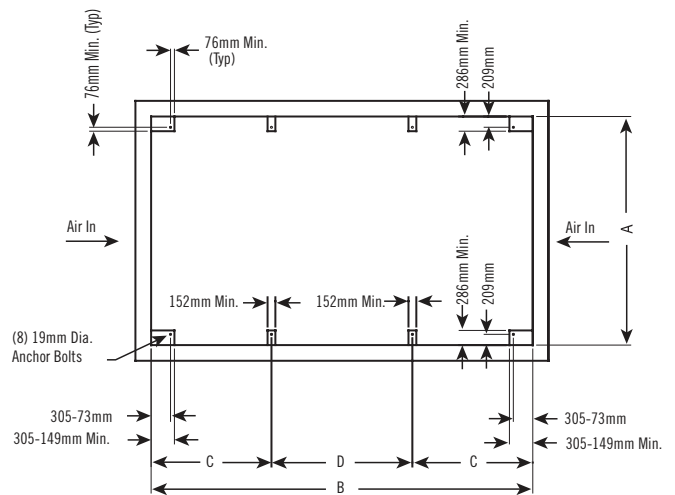


**NOTE: Do not use for construction.** Refer to factory certified dimensions. This catalog includes data current at the time of publication, which should be reconfirmed at the time of purchase. Up-to-date engineering data, free product selection software, and more can be found at [www.Baltimoreaircoil.com.au](http://www.Baltimoreaircoil.com.au).



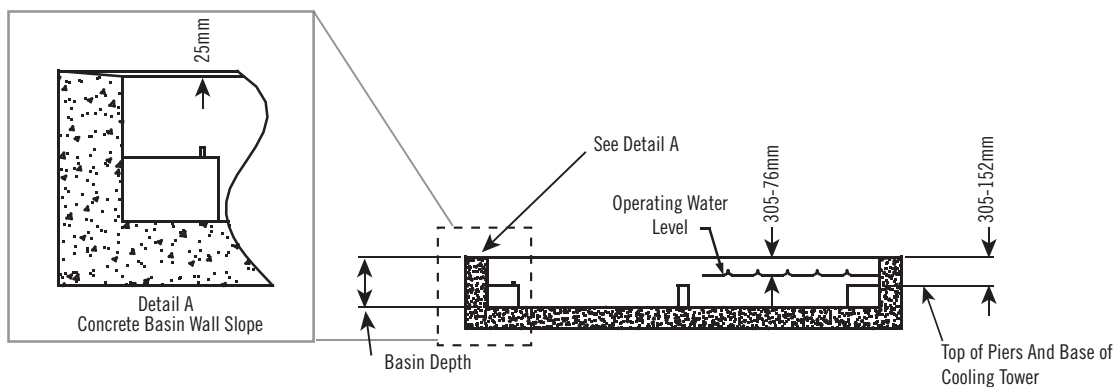
**Plan View of Concrete Basin:**

Models S3E/XES3E-8518-X, S3E/XES3E-1020-X,  
and S3E/XES3E-1222-X



**Plan View of Concrete Basin:**

Model S3E/XES3E-1424-X



**Side View of Concrete Basin: All Models**



# Series 3000 Structural Support

The recommended support arrangement for the Series 3000 Cooling Tower consists of parallel I-beams positioned as shown in the drawings on **page 14**. Besides providing adequate support, the steel also serves to raise the unit above any solid foundation to assure access to the bottom of the tower. The Series 3000 Cooling Tower may also be supported on columns at the anchor bolt locations shown in Plan A (single cell) or Plan C (double cell). A minimum bearing surface of 305mm x 305mm must be provided under each of the concentrated load points. Alternate steel support arrangements can be found on **page 15**. To support a Series 3000 Cooling Tower on columns with an alternate steel support arrangement or the optional upgraded seismic and wind rated unit, consult your local BAC Representative.

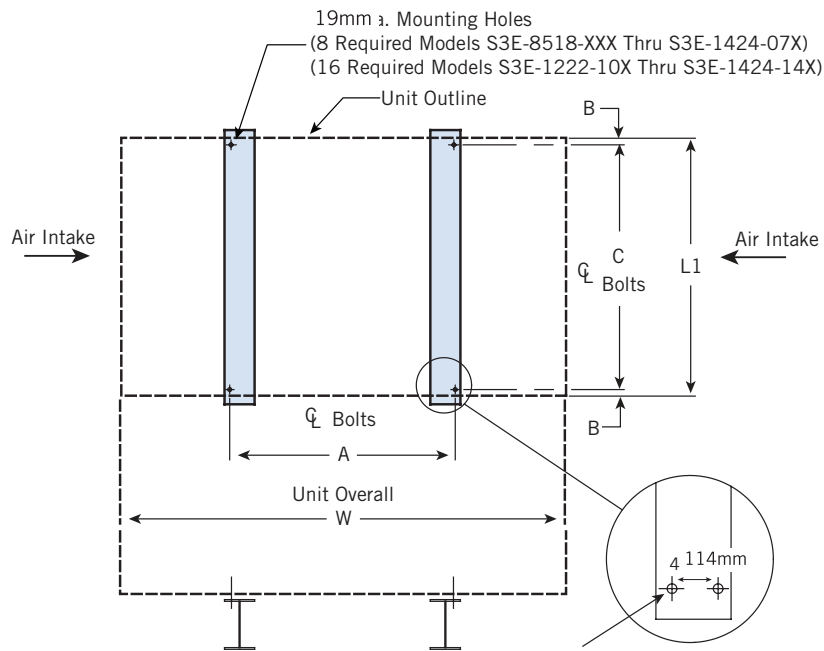
## STRUCTURAL SUPPORT

Model Number	Weights (kgs)			Dimensions (mm)							
	Operating <sup>[1]</sup>	Shipping <sup>[2]</sup>	WT. at Bolt Hole Locations	L1	L2	W	A	B	C	D	E
S3E/XES3E-8518-05x	6908	3670	830	2586	5231	5503	2842	2842	29	2529	121
S3E/XES3E-8518-06x	7316	3837	902	2586	5231	5503	2842	2842	29	2529	121
S3E/XES3E-8518-07x	8423	4082	1084	2586	5231	5503	2842	2842	29	2529	121
S3E/XES3E-1020-06x	8768	4413	1066	2975	6019	6113	3452	3452	29	2918	121
S3E/XES3E-1020-07x	9312	4645	1157	2975	6019	6113	3452	3452	29	2918	121
S3E/XES3E-1222-06x	10818	5248	1270	3598	7264	6565	3914	3914	29	3540	121
S3E/XES3E-1222-07x	11852	5942	1442	3598	7264	6565	3914	3914	29	3540	121
S3E/XES3E-1222-10x	15712	7466	2018	3598	7264	6565	3914	3914	29	3540	121
S3E/XES3E-1222-12x	17000	7933	2236	3598	7264	6565	3914	3914	29	3540	121
S3E/XES3E-1222-13x	17019	7743	2236	3598	7264	6565	3914	3914	29	3540	121
S3E/XES3E-1222-14x	18057	8786	2413	3598	7264	6565	3914	3914	29	3540	121
S3E/XES3E-1424-07x	15730	7548	1370	4243	8549	7333	4672	4672	37	4170	137
S3E/XES3E-1424-12x	21142	10781	2077	4243	8549	7333	4672	4672	37	4170	137
S3E/XES3E-1424-13x	21768	10959	2155	4243	8549	7333	4672	4672	137	4170	137
S3E/XES3E-1424-14x	22485	11136	2245	4243	8549	7333	4672	4672	37	4170	137

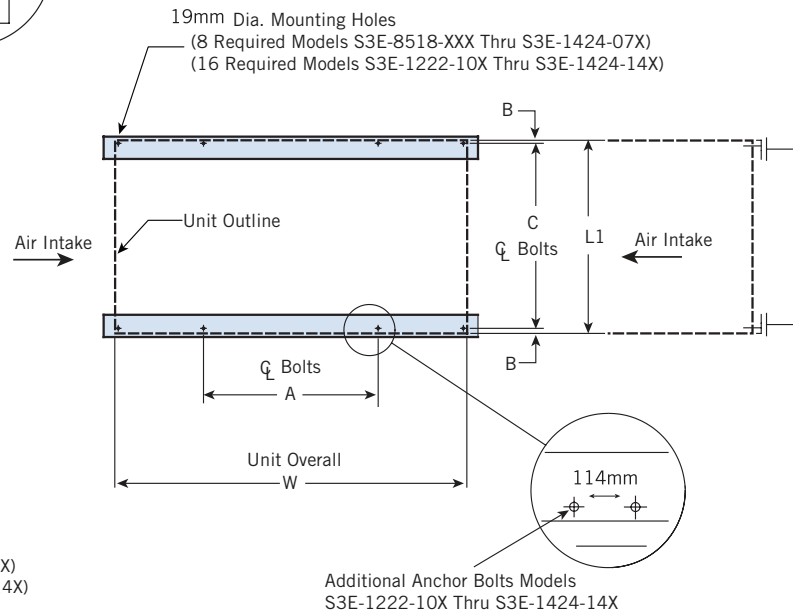


### NOTES:

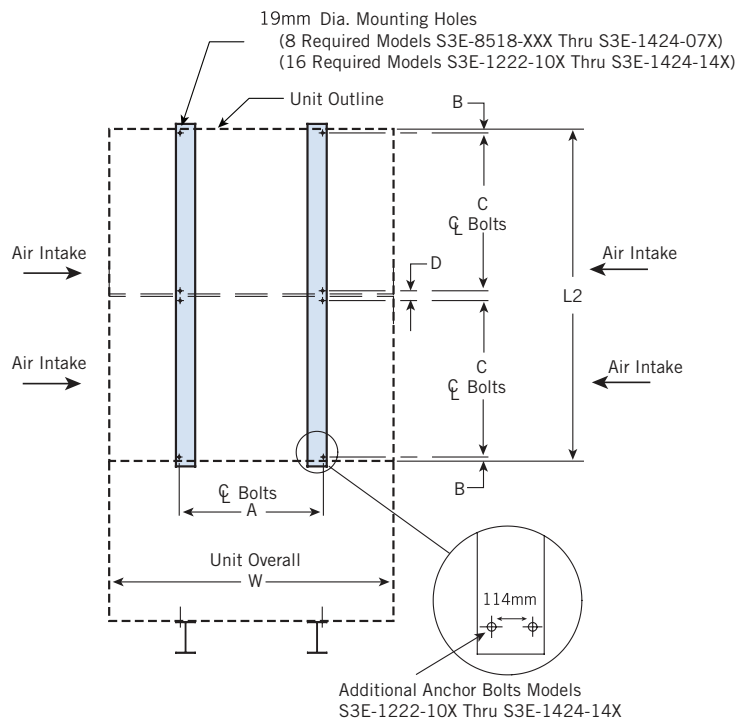
1. Operating weight is based on the water level in cold water basin at overflow height.
2. Unit support beams and anchor bolts to be designed and furnished by others.
3. Support beams must be flush and level at top.
4. Steel frame members perpendicular to the support beams and under the air intake edges of unit must be at least 50mm below the top of the support beams.
5. For support beam spacing other than shown, mounting holes in the unit are to be drilled by others.



**Plan A: Single Cell Unit**



**Plan B: Single Cell Unit**



**Plan C: Double Cell Unit**

# Series 3000 Alternative Structural Support

The Series 3000 Cooling Towers (excluding basinless option) can accommodate Plan A (single cell) and Plan C (double cell) support with alternative spacing of anchor bolt hole center lines as listed in the table below. BAC provides specific anchorage drawings in the job file that reflect the revised anchor bolt hole center line dimension only. IBC wind and seismic load ratings are not available on alternate steel support arrangements. The unit will have pre-punched anchor bolt holes in the standard and minimum hole spacing locations only. All other alternative anchor bolt holes are located and drilled by others.

## ALTERNATIVE STRUCTURAL SUPPORT

Model Number	Standard Spacing "A" Dimension	Alternate Spacing "A" Dimension
S3E/XES3E-8518-X	2842mm	2257mm
S3E/XES3E-1020-X	3452mm	2440mm
S3E/XES3E-1222-X	3914mm	2892mm
S3E/XES3E-1424-X	4672mm	3660mm



**NOTE:** The standard structural support figures on **page 14** apply to alternative structural support as well.

## BASIN HEATERS

Evaporative cooling equipment exposed to below freezing ambient temperatures require protection to prevent freezing of the water in the cold water basin when the unit is idle. Factory-installed electric immersion heaters, which maintain 4.4°C water temperature, are a simple and inexpensive way of providing such protection.

## HEATER kW DATA

Model Number	-17.8°C Ambient Heaters		-28.9°C Ambient Heaters	
	Number of Heaters	kW per Heater	Number of Heaters	kW per Heater
S3E/XES3E-8518	2	6	2	9
S3E/XES3E-1020	2	8	2	12
S3E/XES3E-1222-06x, -07x	2	10	2	14
S3E/XES3E-1222-10x, -12x, -13x, -14x	2	12	2	15
S3E/XES3E-1424-07	2	14	2	18
S3E/XES3E-1424-12x, -13x, -14x	2	14	2	20



**NOTE:** This table is based on 460V/3 phase/60 Hz power.



**BALTIMORE  
AIRCOIL AUSTRALIA**

## COOLING TOWERS

---

CLOSED CIRCUIT COOLING TOWERS

---

ICE THERMAL STORAGE

---

EVAPORATIVE CONDENSERS

---

HYBRID PRODUCTS

---

PARTS & SERVICES



[www.BaltimoreAircoil.com.au](http://www.BaltimoreAircoil.com.au)

120 Wisemans Ferry Road, Somersby NSW 2250 › Telephone (Australia): 1300.134.622 › Telephone (New Zealand): 0800.225.842